

3rd Floor, Pegasus House  
463A Glossop Road  
Sheffield S10 2QD  
E-mail: neqas@coageqa.org.uk

Professor ID Walker (Director)  
Mr TAL Woods (Manager)  
Tel: +44 (0)114 267 3300  
Fax: +44 (0)114 267 3309

**Dra Eleonora Pinca**  
**Resp. Settore Di Coagulazione**  
**Lab. Analisi Cliniche**  
**dr P. Pignatelli**  
**Via Martiri D'Otranto No. 2**  
**73100**  
**Lecce**  
**Italy**

**Participant No. 31859/IT**

---

---

## **Your Results On Survey 203: November 2013**

---

---

For screening tests, (PT/INR, PT for diagnosis, APTT, heparin dosage assessment (HDA) and thrombin time (TT) *reagent-specific* and *overall* median results are calculated, and your percentage deviation from each median is determined. Performance is graded "Outwith consensus" if the percentage deviation is greater than 15% (20% for HDA and TT) from either the *reagent-specific* median if the number of users of your reagent is equal to or greater than 10 or the *overall* median if the number of users of your reagent is less than 10, as there is little statistical validity in assessment against the individual reagent median for small numbers of users. *Please note that for Quick's PT/INR, the number of users are determined as those participants using a locally-derived arithmetic or geometric MNPT.*

For Clauss fibrinogen assays, results are assessed against the overall median for this technique. Results >15% deviation from the median are considered outwith consensus. Multifibrin U method users are assessed separately.

Three *consecutive* instances of performance outwith consensus will generate a letter of concern, with an offer of assistance, from the Scheme Director.

All other assays are graded by the quantile grading system. Grades are recorded in upper or lower case, indicating whether the results were above (upper case) or below (lower case) the median. Results that are identical to the median are awarded with an "A". For cumulative grades this will aid in assessment of bias. Results "persistently outwith consensus" will generate a letter of concern, with an offer of assistance, from the Scheme Director. Due to previously identified differences between methodologies, performance analysis of Factor VIII:C 2-stage and chromogenic assays will not be assessed against the overall median.

\*N/R indicates no result.

Lab. Pignatelli - Lecce

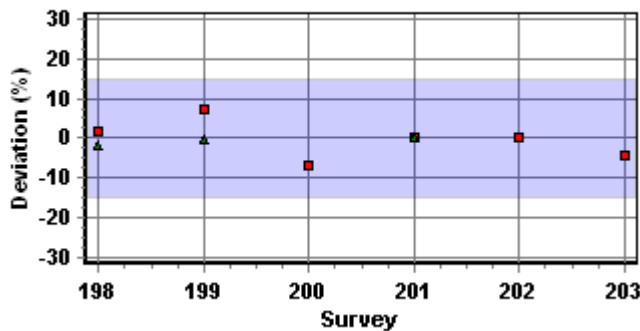
31859

Survey : 203

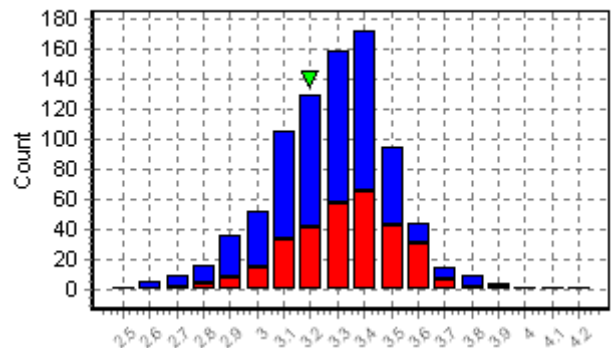
<b>Test</b>	<b>Quick's INR</b>
<b>Sample No</b>	<b>13/36</b>
Your Reagent	IL HemosIL Recombiplastin 2G
<b>Your INR</b>	<b>3.24</b>
Participants in your group	234
<b>Reagent Median INR</b>	<b>3.38</b>
% Deviation	-4.1
Overall Participants	862
<b>Overall median INR</b>	<b>3.31</b>
% Deviation	-2.1
Your assessment against	Reagent
<b>Your performance</b>	<b>Within consensus</b>
Your previous % deviation	0
Your dosage interpretation	***
Overall Interpretations (%)	
Underdosed	***
Adequate	***
Overdosed	***
Non-participation code	

▼ = Your Result  
 Your peer group ■  
 All other results ■

Quick's INR



INR 1 (INR) IL HemosIL Recombiplastin 2G



Lab. Pignatelli - Lecce

31859

Survey : 203

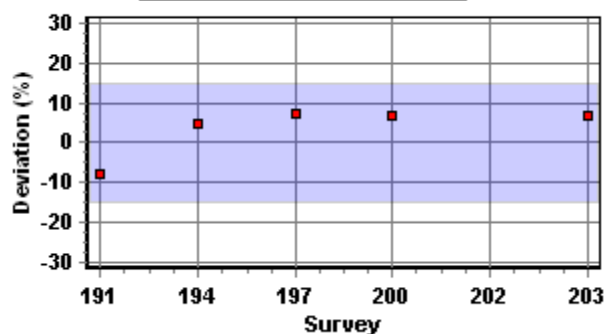
Test	Prothrombin Time
<b>Sample No</b>	<b>13/37</b>
Sample Type	Normal
Your Reagent	IL HemosIL Recombiplastin 2G
<b>Your Result</b>	<b>1.1</b>
Your Units	Ratio
Your normal range/value	0.8 - 1.2
<b>Your test/normal ratio</b>	<b>1.1</b>
Participants in your group	263
<b>Reagent Specific Median</b>	<b>1.03</b>
% Deviation	6.8
Overall Participants	840
<b>Overall median</b>	<b>1.05</b>
% Deviation	4.8
Your assessment against	Reagent
<b>Your performance</b>	<b>Within consensus</b>
Your previous % deviation	N/R
Your interpretation	Normal
Overall Interpretations (%)	
Normal	93.5
Borderline	4.2
Abnormal	2.2
Non-participation code	

▼ = Your Result

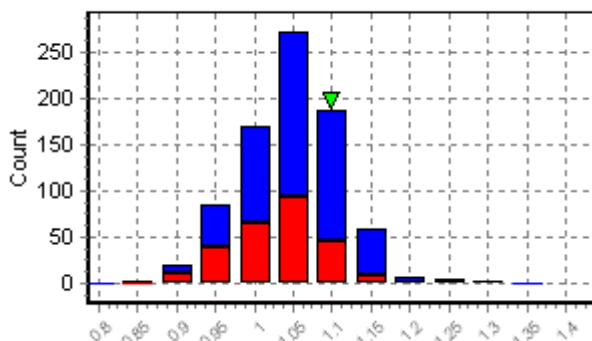
Your peer group ■

All other results ■

**Quick's Prothrombin Time**



**QPT (Ratio) IL HemosIL Recombiplastin 2G**



Lab. Pignatelli - Lecce

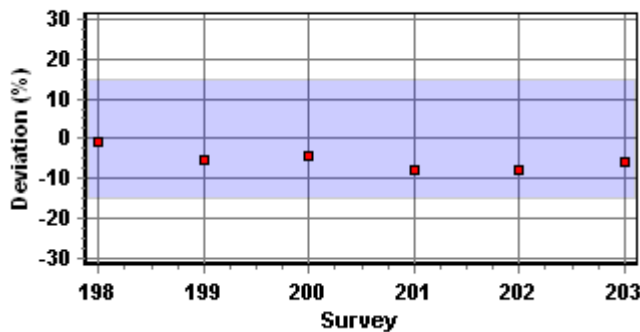
31859

Survey : 203

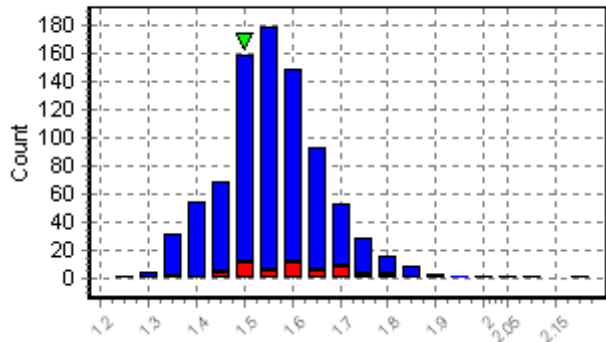
<b>Test</b>	<b>APTT</b>
<b>Sample No</b>	<b>13/38</b>
Sample Type	FVIII deficiency
Your Reagent	IL HemosIL APTT-SP liquid
<b>Your Result</b>	<b>46.9</b>
Your Units	Secs
Your normal range/value	25.4 - 36.9
<b>Your test/normal ratio</b>	<b>1.51</b>
Participants in your group	56
<b>Reagent Specific Median</b>	<b>1.6</b>
% Deviation	-5.6
Overall Participants	863
<b>Overall median</b>	<b>1.56</b>
% Deviation	-3.2
Your assessment against	Reagent
<b>Your performance</b>	<b>Within consensus</b>
Your previous % deviation	-7.9
Your interpretation	Abnormal
Overall Interpretations (%)	
Normal	0.7
Borderline	0.5
Abnormal	98.8
Non-participation code	

▼ = Your Result  
 Your peer group ■  
 All other results ■

A.P.T.T.



APTT (Ratio) IL HemosIL APTT-SP liquid



Lab. Pignatelli - Lecce

31859

Survey : 203

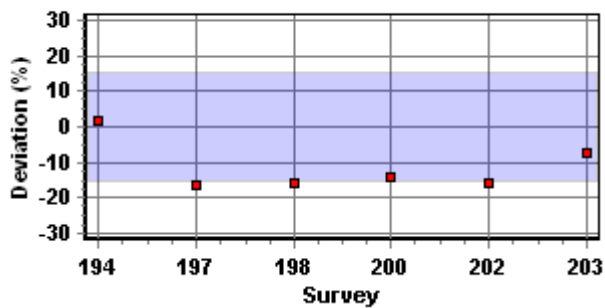
<b>Test</b>	<b>Fibrinogen: Clauss</b>
<b>Sample No</b>	<b>13/40</b>
Your Method	Clauss
Your Reagent	IL HemosIL QFA thrombin
Your Instrument	ACL-TOP
<b>Your Result</b>	<b>2.37</b>
Units	g/l
Your normal range	2-3.93
Participants in your group	704
<b>Median result (g/l)</b>	<b>2.56</b>
% Deviation	-7.4
<b>Your performance</b>	<b>Within consensus</b>
Your previous % deviation	-15.8
Clauss-Derived Median	2.56
Your interpretation	Normal
Overall Interpretations (%)	
Normal	97.4
Borderline	1.7
Abnormal	0.9
Non-participation code	

▼ = Your Result

Your peer group ■

All other results ■

**Clauss Fibrinogen assay**



Clauss (g/l) IL HemosIL QFA thrombin

