

3rd Floor, Pegasus House
463A Glossop Road
Sheffield S10 2QD
E-mail: neqas@coageqa.org.uk

Professor ID Walker (Director)
Mr TAL Woods (Manager)
Tel: +44 (0)114 267 3300
Fax: +44 (0)114 267 3309

Dra Eleonora Pinca
Resp. Settore Di Coagulazione
Lab. Analisi Cliniche
dr P. Pignatelli
Via Martiri D'Otranto No. 2
73100
Lecce
Italy

Participant No. 31859/IT

Your Results On Survey 204: January 2014

For screening tests, (PT/INR, PT for diagnosis, APTT, heparin dosage assessment (HDA) and thrombin time (TT) *reagent-specific* and *overall* median results are calculated, and your percentage deviation from each median is determined. Performance is graded "Outwith consensus" if the percentage deviation is greater than 15% (20% for HDA and TT) from either the *reagent-specific* median if the number of users of your reagent is equal to or greater than 10 or the *overall* median if the number of users of your reagent is less than 10, as there is little statistical validity in assessment against the individual reagent median for small numbers of users. *Please note that for Quick's PT/INR, the number of users are determined as those participants using a locally-derived arithmetic or geometric MNPT.*

For Clauss fibrinogen assays, results are assessed against the overall median for this technique. Results >15% deviation from the median are considered outwith consensus. Multifibrin U method users are assessed separately.

Three *consecutive* instances of performance outwith consensus will generate a letter of concern, with an offer of assistance, from the Scheme Director.

All other assays are graded by the quantile grading system. Grades are recorded in upper or lower case, indicating whether the results were above (upper case) or below (lower case) the median. Results that are identical to the median are awarded with an "A". For cumulative grades this will aid in assessment of bias. Results "persistently outwith consensus" will generate a letter of concern, with an offer of assistance, from the Scheme Director. Due to previously identified differences between methodologies, performance analysis of Factor VIII:C 2-stage and chromogenic assays will not be assessed against the overall median.

*N/R indicates no result.

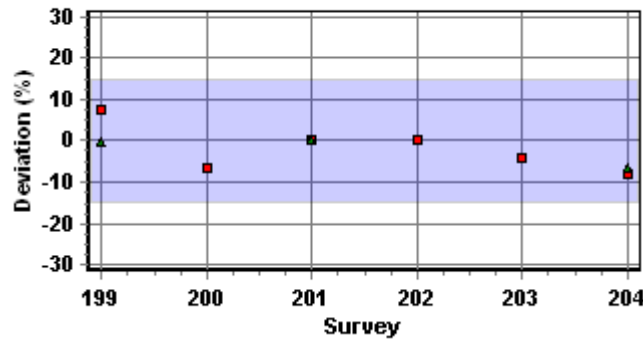
Lab. Pignatelli - Lecce

31859

Survey : 204

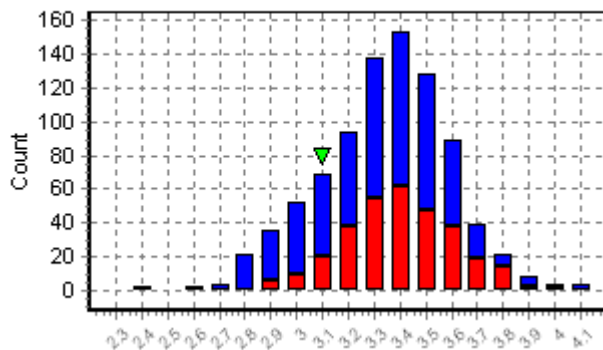
Test	Quick's INR	
	14/01	14/02
Sample No	14/01	14/02
Your Reagent	IL HemosIL Recombiplastin 2G	
Your INR	3.12	2.06
Participants in your group	237	236
Reagent Median INR	3.4	2.2
% Deviation	-8.2	-6.4
Overall Participants	865	862
Overall median INR	3.39	2.2
% Deviation	-8	-6.4
Your assessment against	Reagent	
Your performance	Within consensus	Within consensus
Your previous % deviation	-4.1	-
Your dosage interpretation	***	***
Overall Interpretations (%)		
Underdosed	***	***
Adequate	***	***
Overdosed	***	***
Non-participation code	1	
	2	

Quick's INR

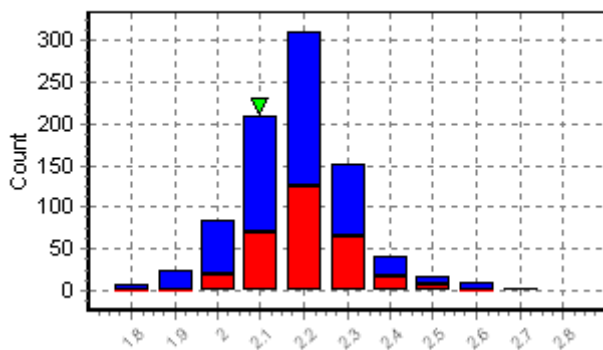


▼ = Your Result
 Your peer group ■
 All other results ■

INR 1 (INR) IL HemosIL Recombiplastin 2G



INR 2 (INR) IL HemosIL Recombiplastin 2G



Lab. Pignatelli - Lecce

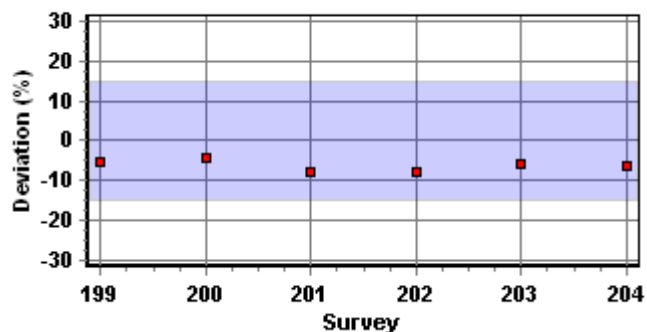
31859

Survey : 204

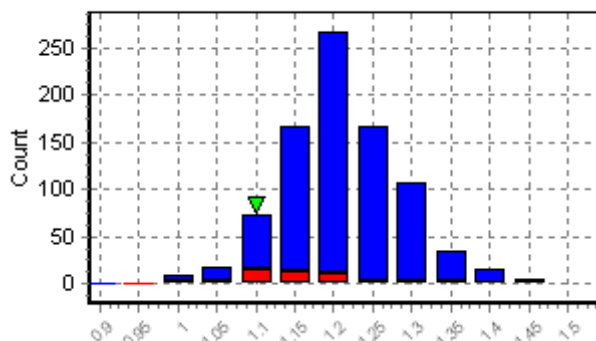
Test	APTT
Sample No	14/03
Sample Type	VWD
Your Reagent	IL HemosIL APTT-SP liquid
Your Result	33.6
Your Units	Secs
Your normal range/value	25.4 - 36.9
Your test/normal ratio	1.08
Participants in your group	52
Reagent Specific Median	1.15
% Deviation	-6.1
Overall Participants	867
Overall median	1.2
% Deviation	-10
Your assessment against	Reagent
Your performance	Within consensus
Your previous % deviation	-5.6
Your interpretation	Normal
Overall Interpretations (%)	
Normal	38.2
Borderline	26.4
Abnormal	35.4
Non-participation code	

▼ = Your Result
 Your peer group ■
 All other results ■

A.P.T.T.



APTT (Ratio) IL HemosIL APTT-SP liquid



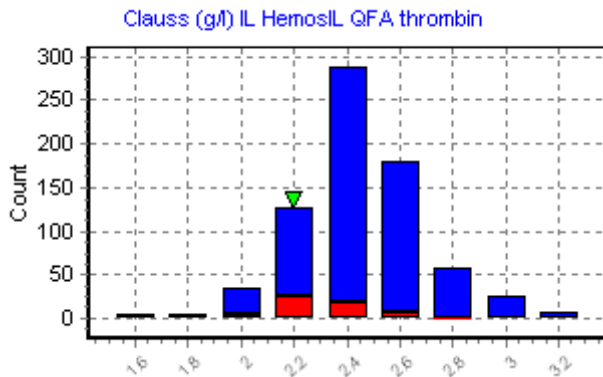
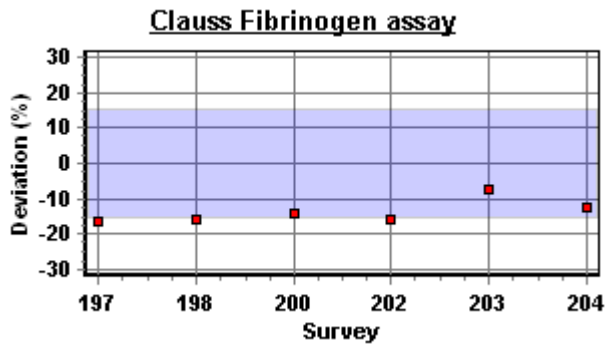
Lab. Pignatelli - Lecce

31859

Survey : 204

Test	Fibrinogen: Clauss
Sample No	14/05
Your Method	Clauss
Your Reagent	IL HemosIL QFA thrombin
Your Instrument	ACL-TOP
Your Result	2.1
Units	g/l
Your normal range	2-3.93
Participants in your group	707
Median result (g/l)	2.4
% Deviation	-12.5
Your performance	Within consensus
Your previous % deviation	-7.4
Clauss-Derived Median	2.4
Your interpretation	Borderline
Overall Interpretations (%)	
Normal	97.4
Borderline	1
Abnormal	1.6
Non-participation code	

▼ = Your Result
 Your peer group ■
 All other results ■



Lab. Pignatelli - Lecce

31859

Survey : 204

Test	D-Dimer
Sample No	14/06
Kit	Hemosil D-Dimer
Instrument	ACL-TOP
Your Result	394
Your Units	ng/ml
Your Cut Off value	232
Participants in your group	74
Kit Specific Median	307
% Deviation	28.3
Interquartile range (A-grade limits)	256 - 363
Your performance quantile	C
Your cumulative grades	E / B / C
Cumulative performance	Within Consensus
Overall Participants	475
Overall median	255
Your interpretation	VTE Not Excluded
Overall Interpretations (%)	
VTE Excluded	18.5
VTE Not Excluded	81.5
Notes	
Non-participation code	

