

Individual Report

Dataset code : 1

Date Submitted : 23 JUL 14



Dr Luigi Tagliaferro
Virology & Molecular Biology
Laboratorio dr. P. Pignatelli s.r.l.
Lecce - I - 73100
Italy.

Laboratory Code: IT057

02 OCT 2014

Dear Dr Luigi Tagliaferro,

QCMD 2014 Mycobacterium tuberculosis DNA EQA Programme - Individual Report

Thank you for participating in this QCMD EQA Programme. Listed below are the panel codes and sample contents of the EQA panel you received.

Expected results of the programme in order of sample content

Sample	Matrix *	Sample Content	Qualitative †	‡
MTBDNA14-03	Synthetic CSF	M. tuberculosis Complex (BCG)	Pos 2/2 (100%)	33.9
MTBDNA14-01	Synthetic CSF	M. tuberculosis Complex (BCG)	Pos 2/2 (100%)	34.2
MTBDNA14-04	Synthetic CSF	M. tuberculosis Complex (BCG)	Pos 2/2 (100%)	37.5
MTBDNA14-02	Synthetic CSF	Mycobacterium negative	Neg 2/2 (100%)	-
MTBDNA14-06	Synthetic sputum	M. tuberculosis Complex (BCG)	Pos 2/2 (100%)	37.5
MTBDNA14-08	Synthetic sputum	M. tuberculosis Complex (BCG)	Pos 2/2 (100%)	39.3
MTBDNA14-10	Synthetic sputum	M. tuberculosis Complex (BCG)	Pos 2/2 (100%)	36.6
MTBDNA14-07	Synthetic sputum	M. tuberculosis Complex (BCG)	Pos 0/2 (0%)	N/D
MTBDNA14-05	Synthetic sputum	M. xenopi	Neg 2/2 (100%)	-
MTBDNA14-09	Synthetic sputum	Mycobacterium negative	Neg 2/2 (100%)	-

* Synthetic CSF: Synthetic cerebrospinal fluid (Protein Rich Buffer: 0.1% Tween 20, 0.5% Bovine serum albumin in phosphate buffered saline). Synthetic sputum: Synthetic sputum formulated to mimic clinical sputum samples for M. tuberculosis diagnostic testing.

† The values provided are specific to the QCMD reference target and methodology used for the qualification of panel members. As quantification values are dependent on the analytical procedure, the nucleic acid extraction and molecular assay used, they will vary from laboratory to laboratory, particularly when there are currently no accepted International Standards available. QCMD provides these values for reference purposes only and it is important that laboratories establish their own values based on their laboratory's molecular procedures. Qualitative: Qualitative results returned as M. tuberculosis complex 'Positive' or 'Negative' by external testing laboratory including the number of test repeats and percentage correct. Ct value: Cycle threshold values provided by external testing laboratory.

Details of your individual performance are provided in this report. A final report containing full performance details for this EQA programme will be provided separately.

If you have any queries concerning this study please contact the QCMD Neutral Office (neutraloffice@qcmd.org).

Yours Sincerely,

Dr Anton Van Loon
QCMD Executive Co-ordinator

QCMD 2014: The data and report documents provided are intended for the sole use of the participant. It is based on material in our possession or supplied to us, which we believe to be reliable. Whilst every effort has been made to ensure its accuracy, we cannot offer any warranty that factual errors have not occurred. We therefore take no responsibility for any damage or loss that may be suffered by reason of any such inaccuracies.

Analysis of your laboratory's Qualitative EQA data

Analysis of your laboratory's performance on the core proficiency samples:

The core proficiency samples in this EQA programme were: MTBDNA14-01, MTBDNA14-02, MTBDNA14-03, MTBDNA14-06, MTBDNA14-08, MTBDNA14-09, MTBDNA14-10
 You reported 7/7 (100.0 %) of the core samples correctly.
 Of the total datasets reported by all participants in this EQA programme, 91.6% reported correct results for all core proficiency samples.

Analysis of your laboratory's performance on all proficiency samples:

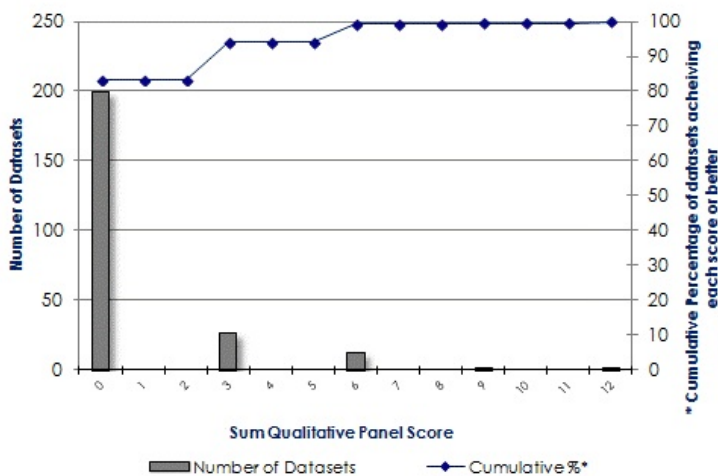
Your laboratory's qualitative results and performance scores

Sample	Sample Content	Qualitative			
		Sample Status	Sample Type	Your qualitative result	Your qualitative score
MTBDNA14-03	M. tuberculosis Complex (BCG)	Frequently detected	Core	positive	0
MTBDNA14-01	M. tuberculosis Complex (BCG)	Frequently detected	Core	positive	0
MTBDNA14-04	M. tuberculosis Complex (BCG)	Frequently detected	Educational	positive	0
MTBDNA14-02	Mycobacterium negative	Negative	Core	negative	0
MTBDNA14-06	M. tuberculosis Complex (BCG)	Frequently detected	Core	positive	0
MTBDNA14-08	M. tuberculosis Complex (BCG)	Frequently detected	Core	positive	0
MTBDNA14-10	M. tuberculosis Complex (BCG)	Frequently detected	Core	positive	0
MTBDNA14-07	M. tuberculosis Complex (BCG)	Frequently detected	Educational	positive	0
MTBDNA14-05	M. xenopi	Negative	Educational	negative	0
MTBDNA14-09	Mycobacterium negative	Negative	Core	negative	0
Sum Qualitative Panel Score					0

Notes on Qualitative Panel Scoring for this EQA programme

Scores were awarded for all panel members based on qualitative sample status.
 Scores provided on panel members MTBDNA14-04, -05 and -07 are for educational purposes only.

Sum Qualitative Panel Scores for all participants



The number of Qualitative datasets analysed	239
The sum of the Qualitative Panel Score for your dataset is	0
This maximum score was achieved by	83.3 % of all datasets