

Programma sperimentale di VEQ del complesso ToRCH

<http://eqas.ifc.cnr.it>

per Ab anti-Toxoplasma gondii, Ab anti-Rubella, Ab anti-Cytomegalovirus e Ab anti-Herpes simplex virus

Riepilogo stampato il 10/07/2012 da QualiMedLab / IFC-CNR, Pisa

Campioni del 31/05/2012: ,

Codice Laboratorio: **U6**

Dr. Tagliaferro
Laboratorio Analisi Dr. P. Pignatelli s.r.l.
Via Martiri d'Otranto
73100 Lecce (LE)

variabilità "stato dell'arte"

Riepiloghi per i seguenti 9 analiti:

| | Range di concentrazione | | | CV% stato dell'arte | | | |
|-------------------------|--------------------------------|-------|-------|---------------------|-----|-----|-----|
| | A | B | C | A | B | C | |
| Toxoplasma gondii IgG | Toxoplasma gondii IgG (UI/mL) | < 10 | 10-30 | > 30 | 20% | 20% | 20% |
| Toxoplasma gondii IgM | Toxoplasma gondii IgM (unità) | < 10 | 10-20 | > 20 | 20% | 20% | 20% |
| Rubella IgG | Rubella IgG (UI/mL) | < 10 | 10-50 | > 50 | 22% | 22% | 22% |
| Rubella IgM | Rubella IgM (unità) | < 25 | 25-50 | > 50 | 22% | 22% | 22% |
| Cytomegalovirus IgG | Cytomegalovirus IgG (unità) | < 0.6 | 0.6-5 | > 5 | 25% | 25% | 25% |
| Cytomegalovirus IgM | Cytomegalovirus IgM (unità) | < 8 | 8-20 | > 20 | 25% | 25% | 25% |
| Helicobacter Pylori IgG | Helicobacter Pylori IgG (U/mL) | < 20 | 20-50 | > 50 | 25% | 25% | 25% |
| Herpes Simplex 1/2 IgG | Herpes Simplex 1/2 IgG (unità) | < 1 | 1-5 | > 5 | 25% | 25% | 25% |
| Herpes Simplex 1/2 IgM | Herpes Simplex 1/2 IgM (unità) | < 1 | 1-5 | > 5 | 25% | 25% | 25% |

L'INTERVALLO DI ACCETTABILITÀ è definito come [valore bersaglio +/- 2SD], dove SD è calcolata dal CV intrametodo 'stato dell'arte' relativo al range di concentrazione dell'analita (vedi tabelle 'variabilità "stato dell'arte"' presenti nei frontespizi dei report).

Come esempio si riporta in dettaglio il calcolo dell'intervallo di accettabilità di una misura di TSH con un valore bersaglio 0,20 microUI/mL.

Dato che 0,20 microUI/mL ricade nel range di concentrazione B, dove il CV stato dell'arte per TSH è 8% (vedi tabella 'variabilità stato dell'arte' del gruppo Ormoni 1), la SD di 0,20 risulta essere $8\% \times 0,20 = 0,016$. Quindi l'intervallo di accettabilità è $0,20 \pm (2 \times 0,016)$ cioè [0,168 - 0,232].

I risultati che ricadono nell'intervallo [0,168 - 0,232] hanno un valore di Z compreso tra -2 e +2 e ottengono punteggi di 4, 3, 2 a seconda della loro distanza dal bersaglio. I risultati esterni all'intervallo invece ottengono punteggi 1 o 0 a seconda che $Z \leq -|3|$ oppure $Z > |3|$ rispettivamente.

I risultati con punteggio 4, 3, 2 sono considerati 'accettabili', quelli con 1 o 0 sono considerati 'inaccettabili'.

Toxoplasma gondii IgG, UI/mL Lab. Code: U6

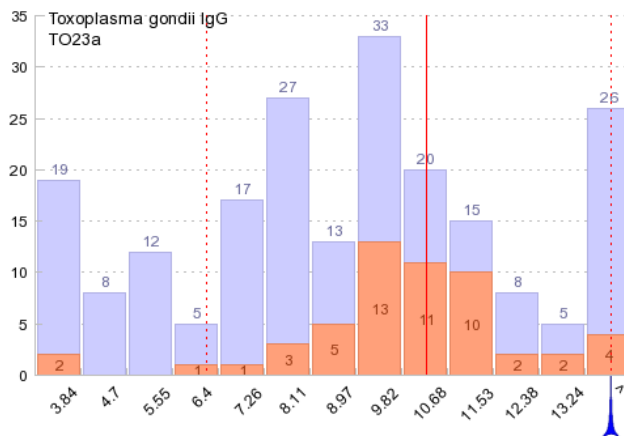
■ CONS (all results) | your result | Target ± 2SD
■ LSN (your method)

Sample: **TO23a** (31.05.2012)

Data processed: 04.07.2012

| your result | vs LSN | vs CONS | z-value vs LSN | score |
|-------------|--------|---------|----------------|----------|
| 14.2 | +38.7% | +66.3% | +1.9 | 2 |

| method | n.res | n.out | mean | CV% | min | max |
|--------|-------|-------|--------|------|-------|-------|
| CONS | 208 | 12 | 8.54 | 36.4 | 1.6 | 18.2 |
| LSN | 54 | 2 | 10.24 | 17.4 | 6.3 | 15.0 |
| VID | 58 | 3 | 9.35 | 20.8 | 4.0 | 13.0 |
| IMM2 | 33 | 1 | 7.44 | 15.2 | 5.0 | 9.7 |
| AXS | 16 | 0 | 4.25 | 28.2 | 1.6 | 6.0 |
| ARC | 10 | 0 | 3.67 | 6.8 | 3.3 | 4.2 |
| ACC | 9 | 1 | 15.69 | 7.9 | 14.5 | 18.2 |
| IMM | 8 | 0 | 6.85 | 19.3 | 5.0 | 8.27 |
| ROCX | 5 | 0 | 122.20 | 9.2 | 107.8 | 135.2 |
| CHOR | 4 | 0 | 10.07 | 25.1 | 8.4 | 13.8 |

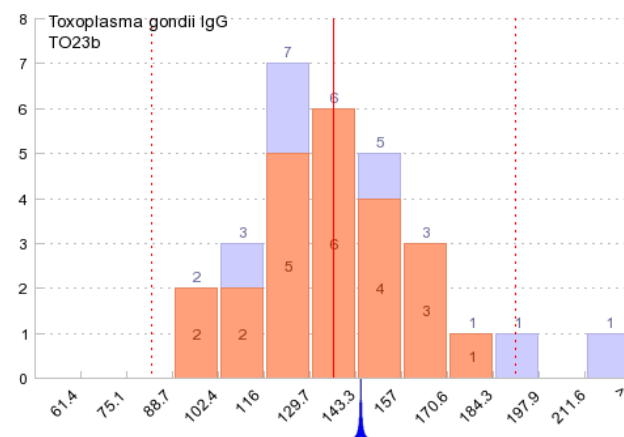


Sample: **TO23b** (31.05.2012)

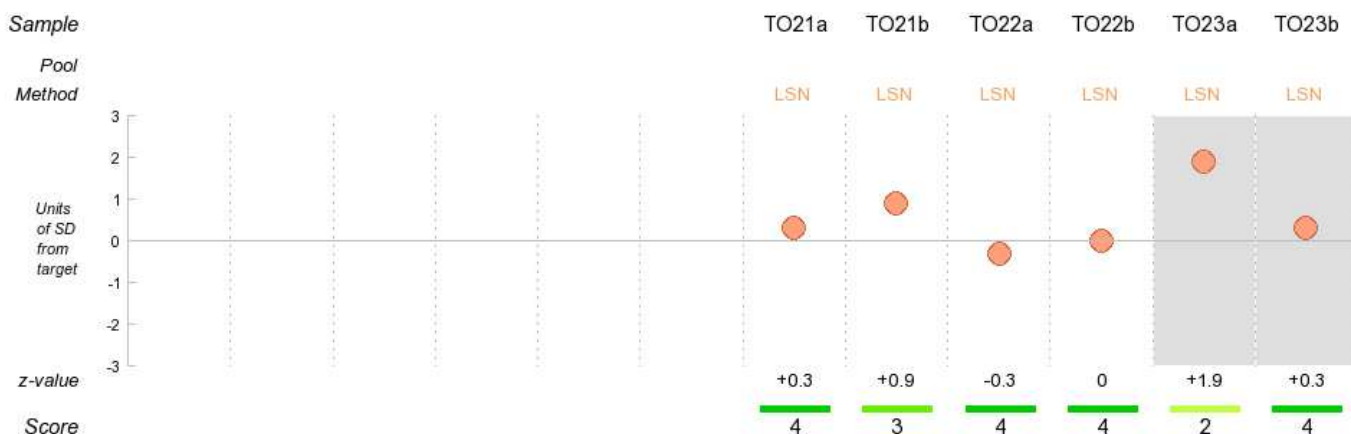
Data processed: 04.07.2012

| your result | vs LSN | vs CONS | z-value vs LSN | score |
|-------------|--------|---------|----------------|----------|
| 144 | +5.9% | +5.5% | +0.3 | 4 |

| method | n.res | n.out | mean | CV% | min | max |
|--------|-------|-------|--------|------|-------|-------|
| CONS | 29 | 1 | 136.51 | 17.9 | 97.0 | 196.8 |
| LSN | 23 | 0 | 135.93 | 16.6 | 97.0 | 182.0 |
| ARC | 3 | 0 | 117.70 | 6.6 | 110.4 | 125.8 |



Toxoplasma gondii IgG, lab. performance - mean score (6 results): 3.5



Toxoplasma gondii IgM, unità **Lab. Code: U6**

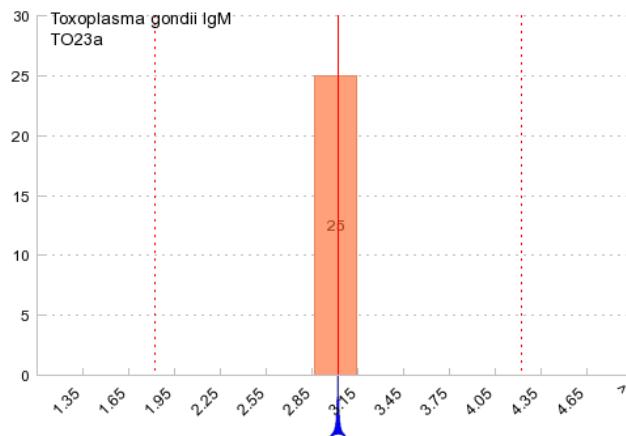
■ CONS (all results) | your result | Target ± 2SD
■ LSN (your method)

Sample: **TO23a** (31.05.2012)

Data processed: 04.07.2012

| your result | vs LSN | vs CONS | z-value vs LSN | score |
|-------------|--------|---------|----------------|-------|
| 3 | 0% | - | - | 4 |

| method | n.res | n.out | mean | CV% | min | max |
|--------|-------|-------|------|-----|-----|-----|
| LSN | 25 | 0 | 3 | 0.0 | 3 | 3 |

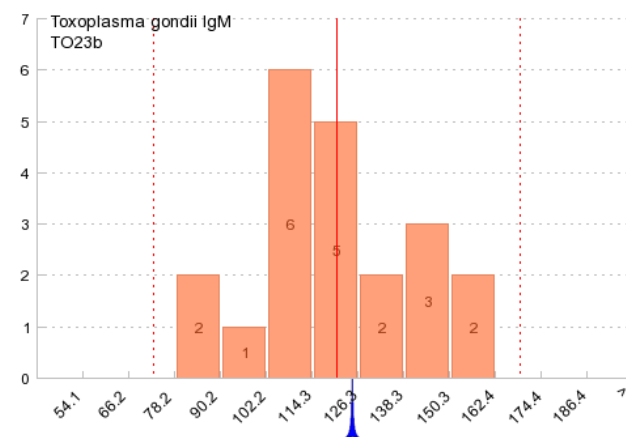


Sample: **TO23b** (31.05.2012)

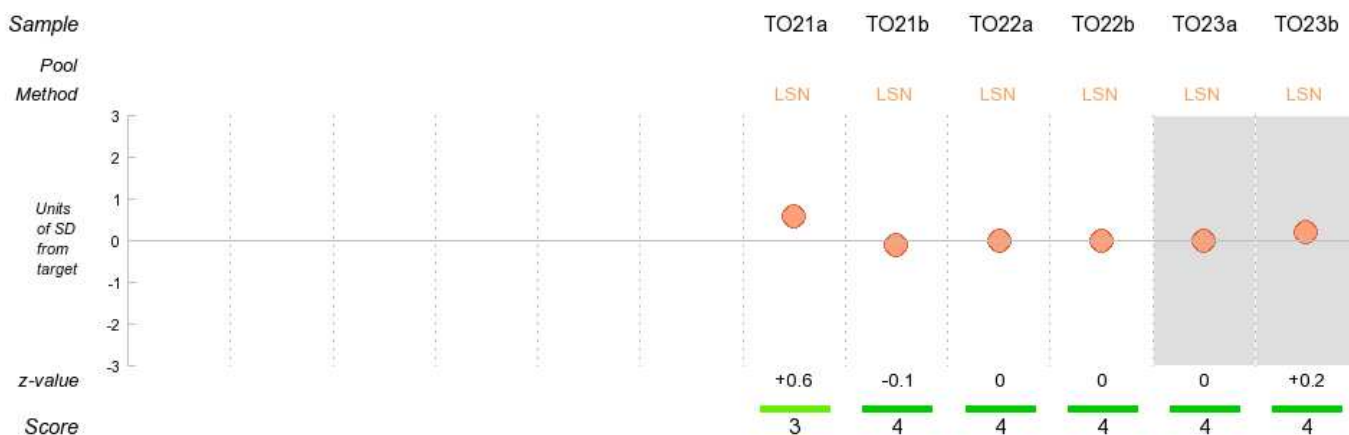
Data processed: 04.07.2012

| your result | vs LSN | vs CONS | z-value vs LSN | score |
|-------------|--------|---------|----------------|-------|
| 124 | +3.1% | - | - | 4 |

| method | n.res | n.out | mean | CV% | min | max |
|--------|-------|-------|------|------|-----|-----|
| LSN | 21 | 0 | 120 | 17.0 | 81 | 158 |



Toxoplasma gondii IgM, lab. performance - mean score (6 results): 3.8



Rubella IgG, UI/mL Lab. Code: U6

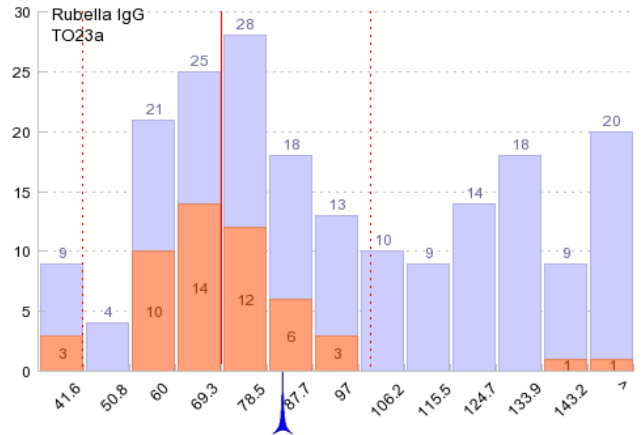
■ CONS (all results) your result Target $\pm 2SD$
■ LSN (your method)

Sample: **TO23a** (31.05.2012)

Data processed: 04.07.2012

| your result | vs LSN | vs CONS | z-value vs LSN | score |
|-------------|--------|---------|----------------|----------|
| 80.9 | +17.8% | -12.4% | +0.8 | 3 |

| method | n.res | n.out | mean | CV% | min | max |
|--------|-------|-------|--------|------|-------|-------|
| CONS | 198 | 3 | 92.36 | 39.0 | 14.0 | 198.0 |
| LSN | 50 | 4 | 68.65 | 16.4 | 36.1 | 90.4 |
| VID | 56 | 2 | 125.10 | 13.4 | 93.0 | 170.0 |
| IMM2 | 28 | 1 | 69.21 | 23.1 | 31.0 | 108.0 |
| AXS | 13 | 1 | 64.84 | 43.3 | 21.2 | 109.8 |
| ARC | 12 | 0 | 80.76 | 9.7 | 69.3 | 96.2 |
| ACC | 8 | 0 | 107.80 | 46.3 | 29.0 | 161.0 |
| IMM | 7 | 1 | 54.13 | 9.9 | 47.4 | 60.1 |
| ROCX | 7 | 1 | 140.50 | 12.3 | 114.1 | 166.5 |
| CHOR | 4 | 0 | 88.78 | 37.5 | 54.8 | 130.0 |

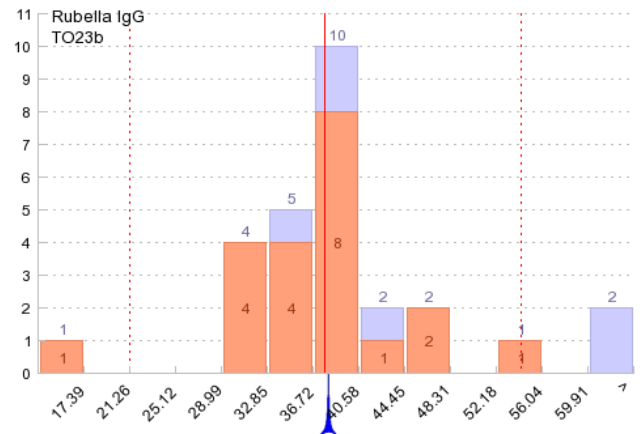


Sample: **TO23b** (31.05.2012)

Data processed: 04.07.2012

| your result | vs LSN | vs CONS | z-value vs LSN | score |
|-------------|--------|---------|----------------|----------|
| 37.8 | +0.7% | -2.2% | 0 | 4 |

| method | n.res | n.out | mean | CV% | min | max |
|--------|-------|-------|-------|------|------|------|
| CONS | 27 | 3 | 38.65 | 14.4 | 31.2 | 55.9 |
| LSN | 21 | 2 | 37.53 | 11.8 | 31.2 | 47.0 |
| ARC | 3 | 0 | 38.17 | 5.4 | 35.8 | 39.4 |

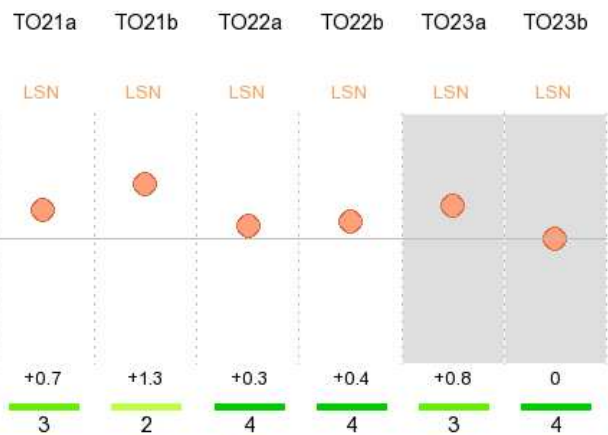


Rubella IgG, lab. performance - mean score (6 results): 3.3

Sample

Pool
Method

Units of SD from target
z-value
Score



Rubella IgM, unità Lab. Code: U6

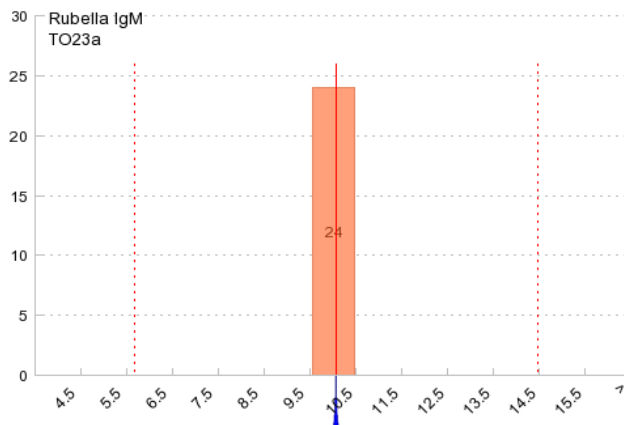
■ CONS (all results) | your result | Target ± 2SD
■ LSN (your method)

Sample: **TO23a** (31.05.2012)

Data processed: 04.07.2012

| your result | vs LSN | vs CONS | z-value vs LSN | score |
|-------------|--------|---------|----------------|-------|
| 10 | 0% | - | - | 4 |

| method | n.res | n.out | mean | CV% | min | max |
|--------|-------|-------|------|-----|-----|-----|
| LSN | 24 | 0 | 10 | 0.0 | 10 | 10 |

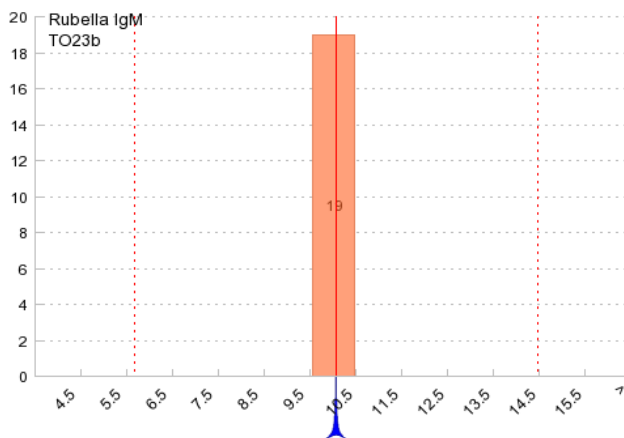


Sample: **TO23b** (31.05.2012)

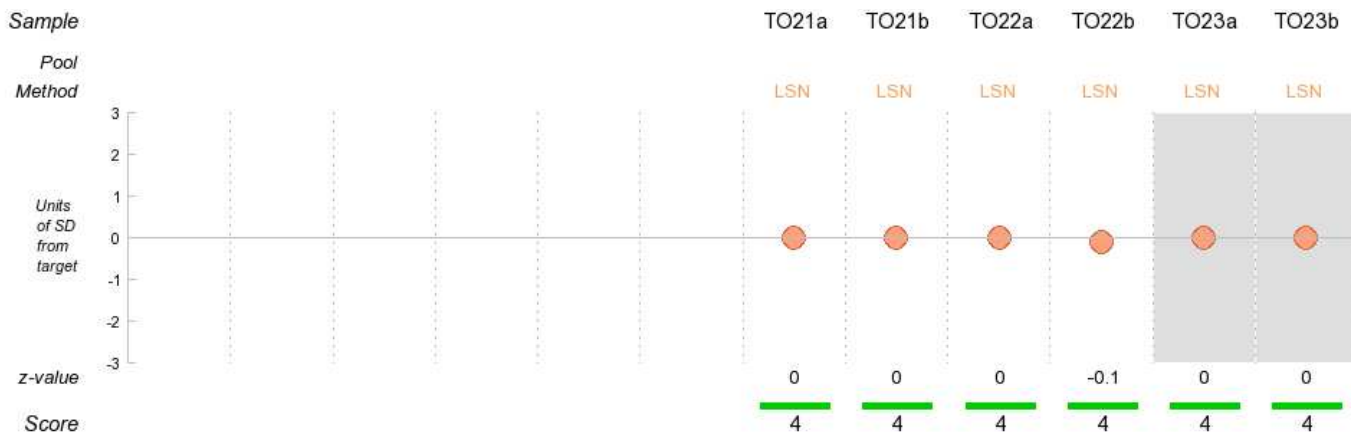
Data processed: 04.07.2012

| your result | vs LSN | vs CONS | z-value vs LSN | score |
|-------------|--------|---------|----------------|-------|
| 10 | 0% | - | - | 4 |

| method | n.res | n.out | mean | CV% | min | max |
|--------|-------|-------|------|-----|-----|-----|
| LSN | 19 | 0 | 10 | 0.0 | 10 | 10 |



Rubella IgM, lab. performance - mean score (6 results): 4



Cytomegalovirus IgG, unità **Lab. Code: U6**

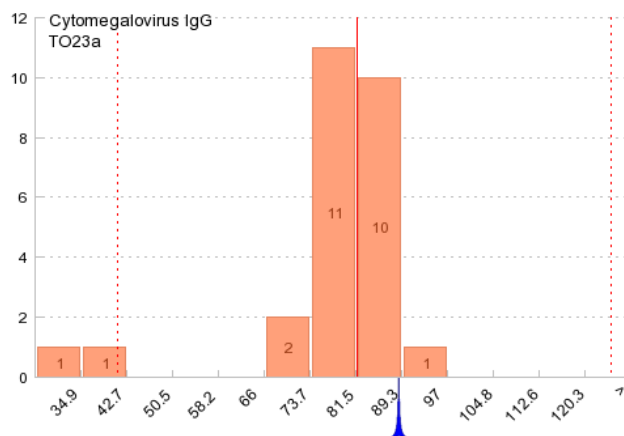
■ CONS (all results) | your result | Target ± 2SD
■ LSN2 (your method)

Sample: **TO23a** (31.05.2012)

Data processed: 04.07.2012

| your result | vs LSN2 | vs CONS | z-value vs LSN2 | score |
|-------------|---------|---------|-----------------|----------|
| 88.2 | +8.5% | - | - | 4 |

| method | n.res | n.out | mean | CV% | min | max |
|--------|-------|-------|------|-----|-----|-----|
| LSN2 | 26 | 2 | 81 | 5.8 | 71 | 93 |

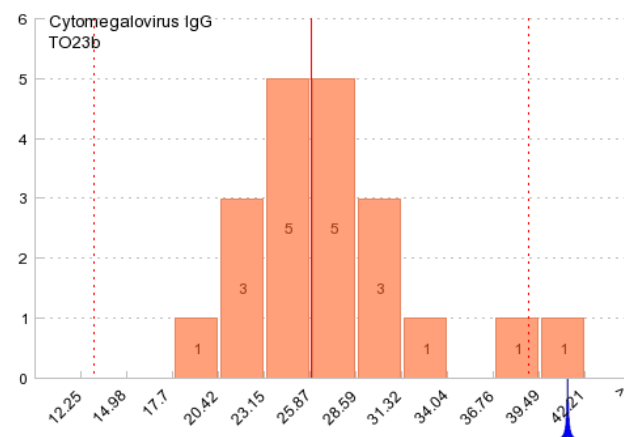


Sample: **TO23b** (31.05.2012)

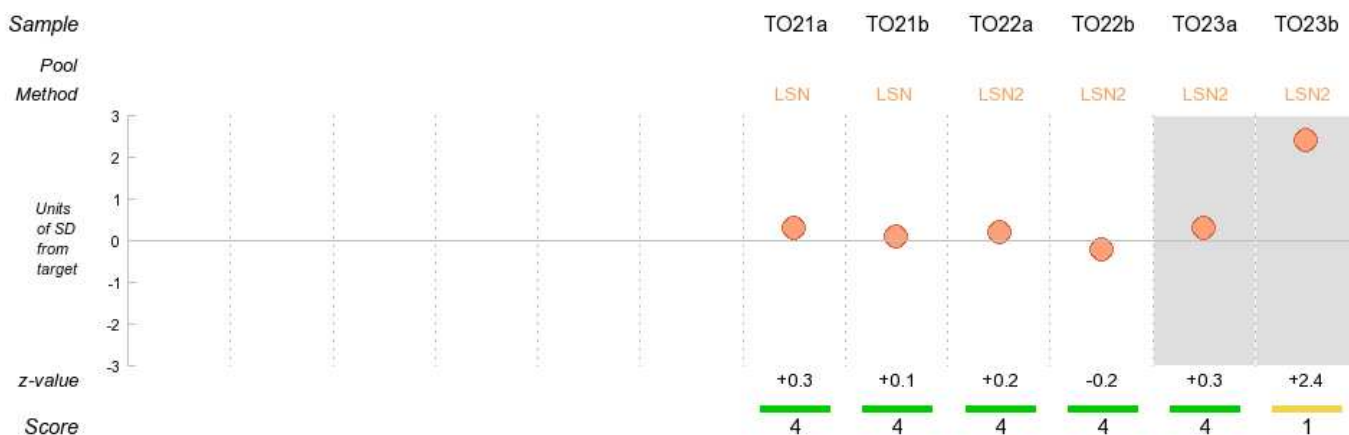
Data processed: 04.07.2012

| your result | vs LSN2 | vs CONS | z-value vs LSN2 | score |
|-------------|---------|---------|-----------------|----------|
| 41 | +58.9% | - | - | 1 |

| method | n.res | n.out | mean | CV% | min | max |
|--------|-------|-------|------|------|-----|-----|
| LSN2 | 20 | 2 | 25 | 12.7 | 19 | 32 |



Cytomegalovirus IgG, lab. performance - mean score (6 results): 3.5



Cytomegalovirus IgM, unità **Lab. Code: U6**

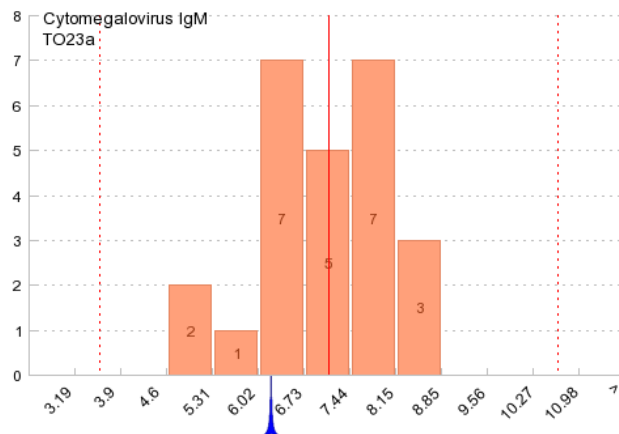
■ CONS (all results) | your result | Target ± 2SD
■ LSN2 (your method)

Sample: **TO23a** (31.05.2012)

Data processed: 04.07.2012

| your result | vs LSN2 | vs CONS | z-value vs LSN2 | score |
|-------------|---------|---------|-----------------|----------|
| 6.17 | -12.9% | - | - | 4 |

| method | n.res | n.out | mean | CV% | min | max |
|--------|-------|-------|------|------|-----|-----|
| LSN2 | 25 | 0 | 7 | 14.0 | 5 | 8 |

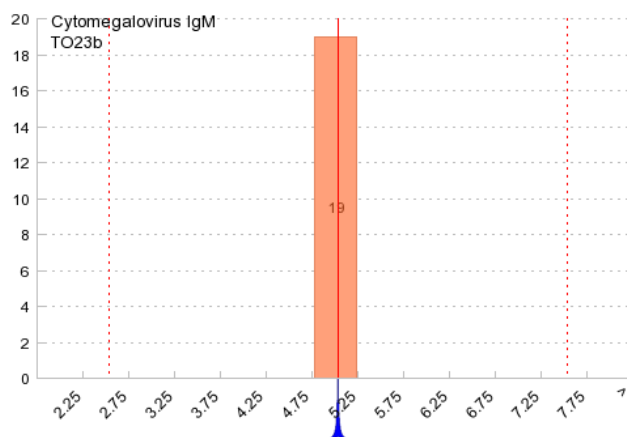


Sample: **TO23b** (31.05.2012)

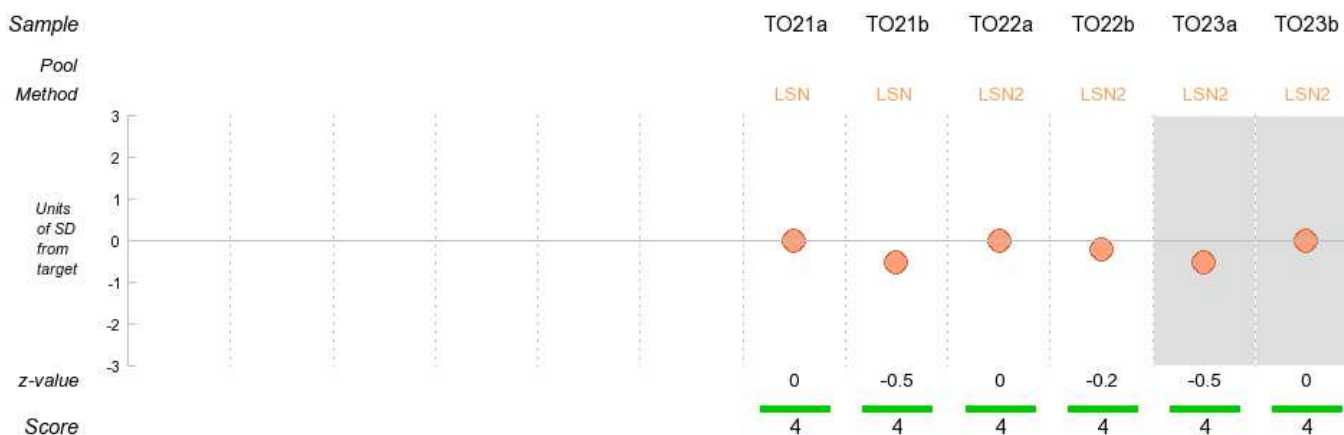
Data processed: 04.07.2012

| your result | vs LSN2 | vs CONS | z-value vs LSN2 | score |
|-------------|---------|---------|-----------------|----------|
| 5 | 0% | - | - | 4 |

| method | n.res | n.out | mean | CV% | min | max |
|--------|-------|-------|------|-----|-----|-----|
| LSN2 | 19 | 0 | 5 | 0.0 | 5 | 5 |



Cytomegalovirus IgM, lab. performance - mean score (6 results): 4



Helicobacter Pylori IgG, U/mL Lab. Code: U6

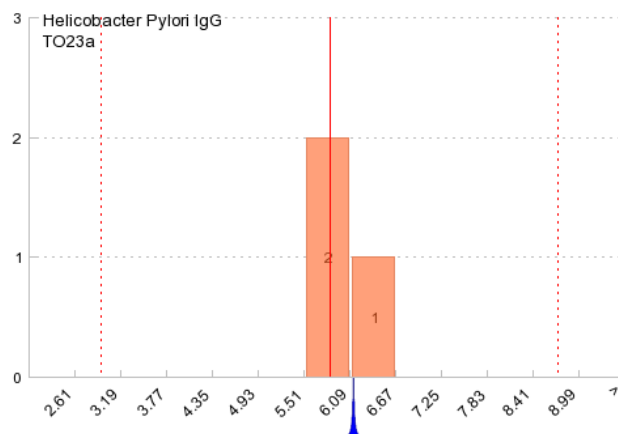
■ CONS (all results) | your result | Target ± 2SD
■ CHOR (your method)

Sample: **TO23a** (31.05.2012)

Data processed: 04.07.2012

| your result | vs CHOR | vs CONS | z-value vs CHOR | score |
|-------------|---------|---------|-----------------|-------|
| 6.1 | +5.2% | - | - | 4 |

| method | n.res | n.out | mean | CV% | min | max |
|--------|-------|-------|------|-----|-----|-----|
| CHOR | 3 | 0 | 5 | 4.6 | 5 | 6 |

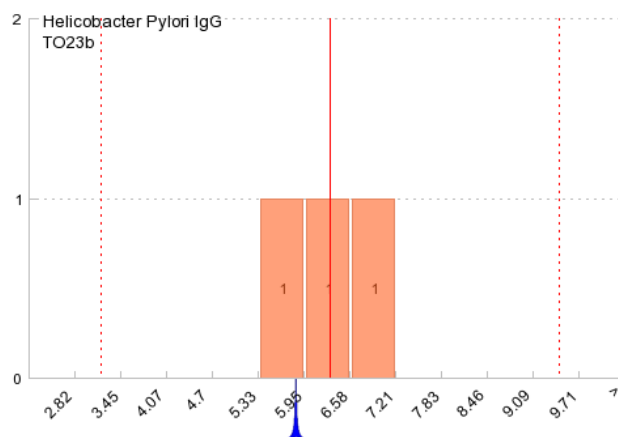


Sample: **TO23b** (31.05.2012)

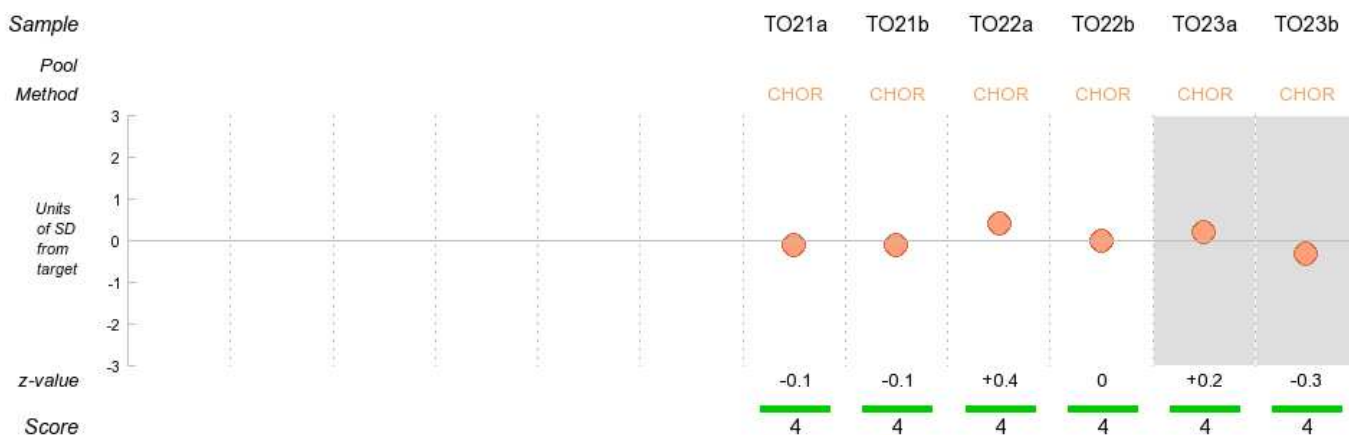
Data processed: 04.07.2012

| your result | vs CHOR | vs CONS | z-value vs CHOR | score |
|-------------|---------|---------|-----------------|-------|
| 5.8 | -7.5% | - | - | 4 |

| method | n.res | n.out | mean | CV% | min | max |
|--------|-------|-------|------|------|-----|-----|
| CHOR | 3 | 0 | 6 | 10.3 | 5 | 7 |



Helicobacter Pylori IgG, lab. performance - mean score (6 results): 4



Herpes Simplex 1/2 IgG, unità Lab. Code: U6

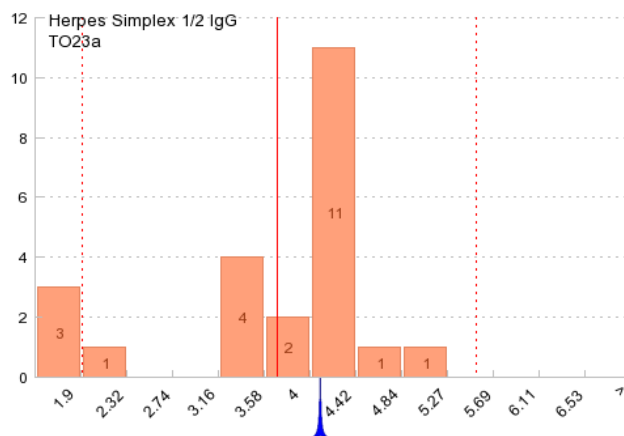
■ CONS (all results) | your result | Target ± 2SD
■ LSN (your method)

Sample: **TO23a** (31.05.2012)

Data processed: 04.07.2012

| your result | vs LSN | vs CONS | z-value vs LSN | score |
|-------------|--------|---------|----------------|----------|
| 4.07 | +10.9% | - | - | 4 |

| method | n.res | n.out | mean | CV% | min | max |
|--------|-------|-------|------|------|-----|-----|
| LSN | 24 | 2 | 3 | 24.8 | 1 | 5 |

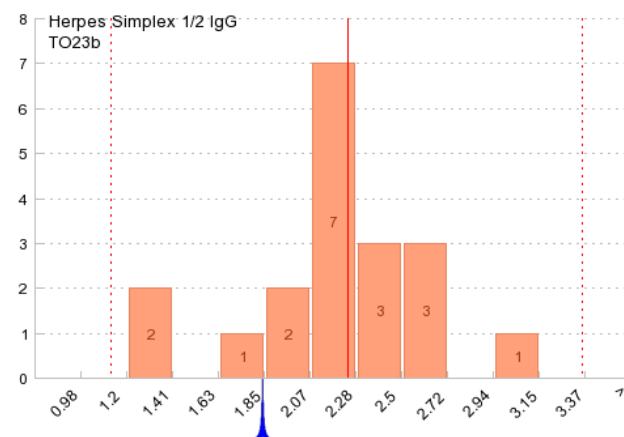


Sample: **TO23b** (31.05.2012)

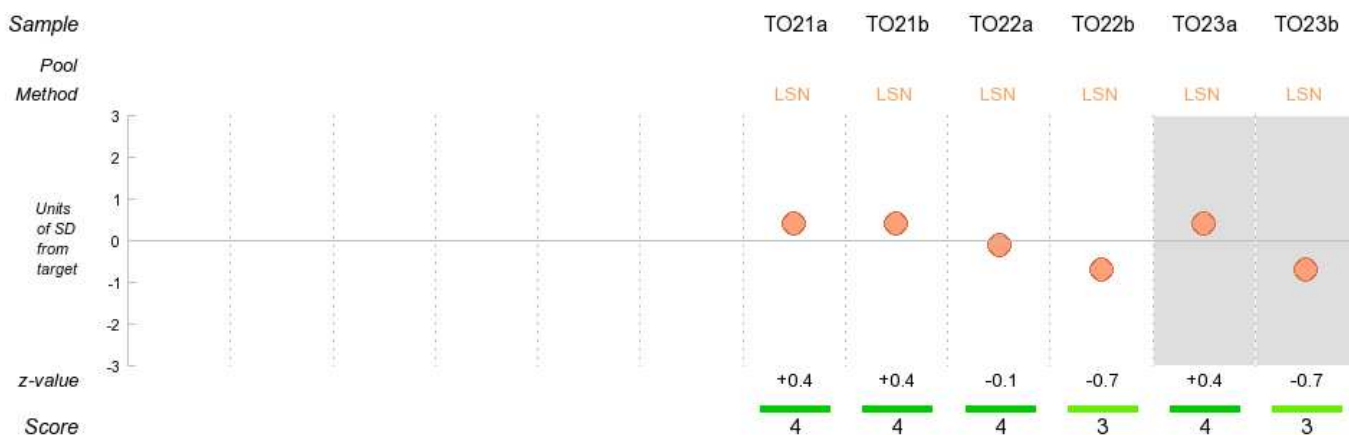
Data processed: 04.07.2012

| your result | vs LSN | vs CONS | z-value vs LSN | score |
|-------------|--------|---------|----------------|----------|
| 1.83 | -17.9% | - | - | 3 |

| method | n.res | n.out | mean | CV% | min | max |
|--------|-------|-------|------|------|-----|-----|
| LSN | 19 | 1 | 2 | 15.0 | 1 | 3 |



Herpes Simplex 1/2 IgG, lab. performance - mean score (6 results): 3.7



Herpes Simplex 1/2 IgM, unità Lab. Code: U6

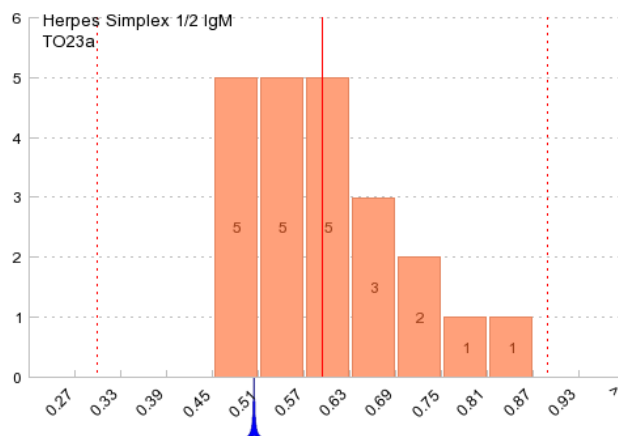
■ CONS (all results) ▲ your result | Target ± 2SD
■ LSN (your method)

Sample: **TO23a** (31.05.2012)

Data processed: 04.07.2012

| your result | vs LSN | vs CONS | z-value vs LSN | score |
|-------------|--------|---------|----------------|-------|
| 0.5 | -15.3% | - | - | 3 |

| method | n.res | n.out | mean | CV% | min | max |
|--------|-------|-------|------|------|-----|-----|
| LSN | 22 | 1 | 0 | 14.0 | 0 | 0 |

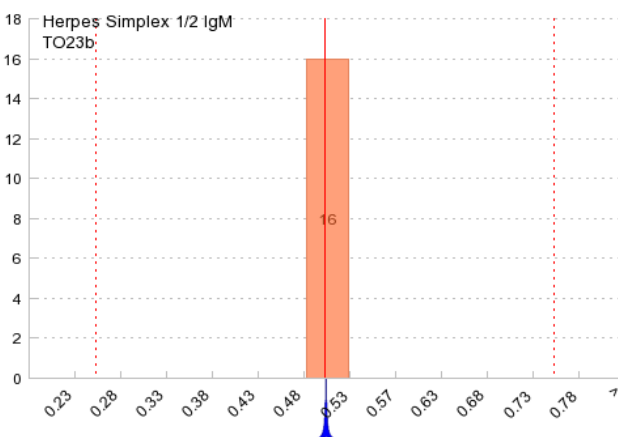


Sample: **TO23b** (31.05.2012)

Data processed: 04.07.2012

| your result | vs LSN | vs CONS | z-value vs LSN | score |
|-------------|--------|---------|----------------|-------|
| 0.5 | 0% | - | - | 4 |

| method | n.res | n.out | mean | CV% | min | max |
|--------|-------|-------|------|-----|-----|-----|
| LSN | 16 | 0 | 0 | 0.0 | 0 | 0 |



Herpes Simplex 1/2 IgM, lab. performance - mean score (6 results): 3.2

